

PWMU12

datasheet 0.1



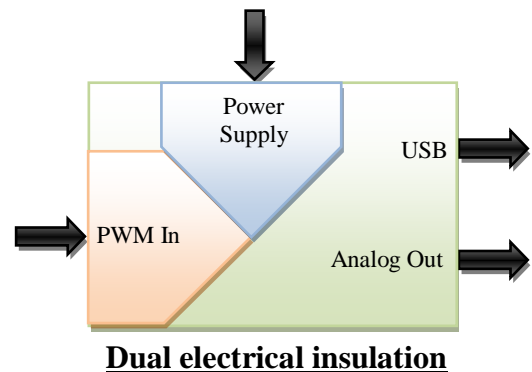
Description

PWMU12 is designed to convert a PWM into a programmable analog voltage. This device is self sufficient but can also be configured or used via a PC.

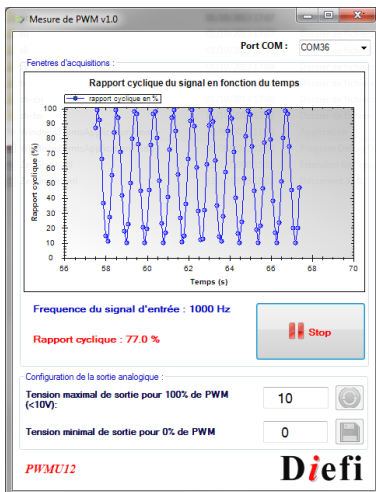
The device can be controlled and configured by software. 3 Leds indicate power supply status, PWM detection and USB communication.

Technical features

- ✓ Conversion from 0 to 100%
- ✓ Input PWM from TTL up to 24V.
- ✓ Input frequency from 1Hz up to 10KHz.
- ✓ 0.1% analog output accuracy with 1mV steps.
- ✓ Voltage output from -10V up to +10V.
- ✓ Power supply from 7V to 40V DC 2 Watts max.
- ✓ Dual electrical insulation.
- ✓ Compact design: 105mm x 72mm x 20mm.



Software



Easy to install and user friendly software on PC.

PWM value measure with a precision of 0.1%

PWM frequency measure with a precision of 1µs

PWM display in real time.

START/STOP acquisition button

Configuration of the analog output value range from -10V to +10V versus the PWM value range (0-100%)

Save/Load parameters.

Diefi

Développement en Informatique, Electronique et Fabrication Industrielle
Bat. 20, ZA de La Mare 2 – 10 Avenue du Fief - ZI des Béthunes
BP 20469 SAINT OUEN L'AUMONE - 95005 CERGY PONTOISE CEDEX - FRANCE